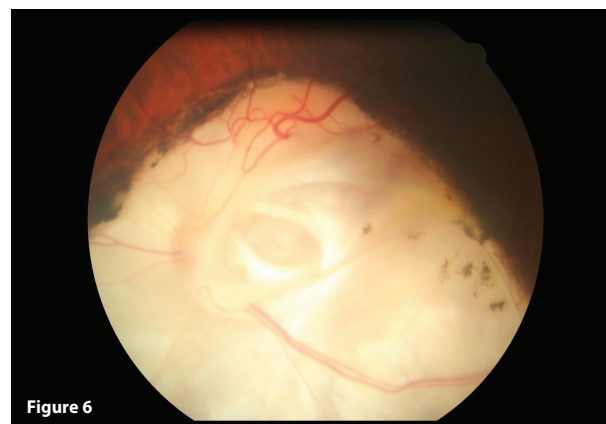
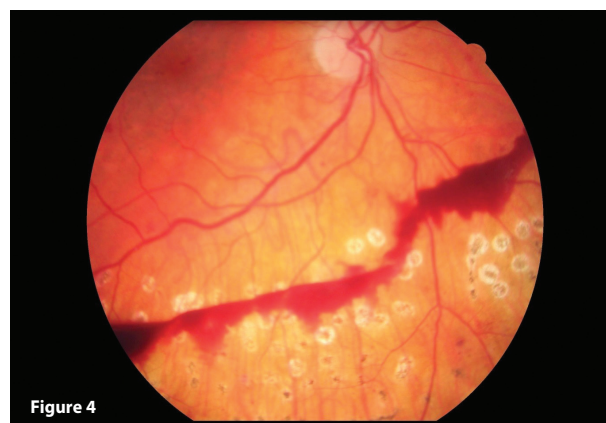
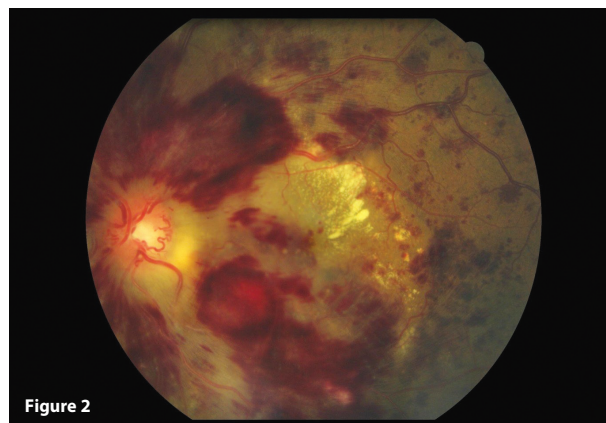


Retinal pathology image classification quiz

In almost eight years of service as an ophthalmic clinician, I have eye screened over 23,183 individual patient episodes and graded over 27,107 image sets, primarily for diabetic retinopathy services, but also identifying other retinal lesions

for quality assurance. The following 12 figures show some of the retinal conditions we clinicians capture in digital fundus photography. Can you identify them all?



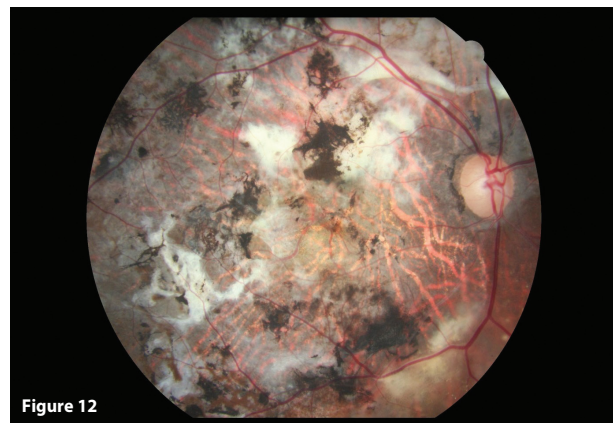
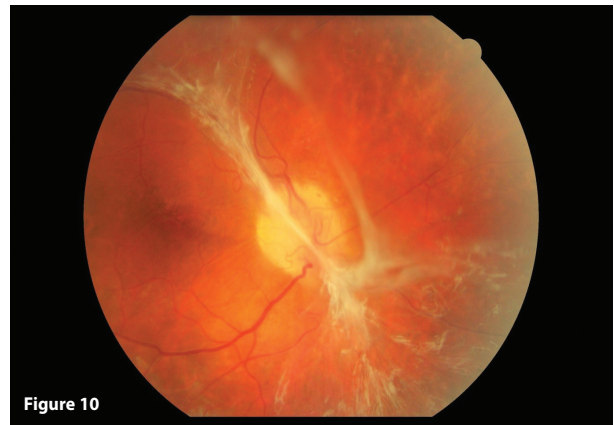


Figure 7: LE papilledema from increased intracranial pressure: VA 6/9.
 Figure 8: LE retinal arteriolar macroaneurysm: VA 6/6.
 Figure 9: RE wet age-related macular degeneration: VA of HM.
 Figure 10: RE fibrosis proliferation in diabetic retinopathy: VA 6/24.
 Figure 11: RE large multiple macular drusen: VA 6/18.
 Figure 12: RE bilateral Serpiginous Choroiditis: VA 6/36.

Figure 1: RE unilateral melanocytoma: VA 6/9.
 Figure 2: LE ocular occlusion: VA PL.
 Figure 3: RE macular scar from Ocular Toxoplasmosis: VA HM.
 Figure 4: RE pre-retinal haemorrhage with inferior laser: VA 6/12.
 Figure 5: LE unilateral asteroid hyalosis: VA 6/9.
 Figure 6: LE longstanding coloboma retinal scar: VA PL.

Answers



Rahila Bashir,
 Retinal Image Specialist & Grading Consultant,
 Gloucestershire Hospitals NHS Trust;
 Research Advisory Panel (RAP) member,
 NIHR CLAHRC North Thames.

E: rahilabashir2014@gmail.com

Declaration of Competing Interests
 None declared.

Acknowledgments:

Each image diagnosis has been concluded from MDT meetings, clinical lead advice, patient medical history and hospital eye centre lab investigation reports